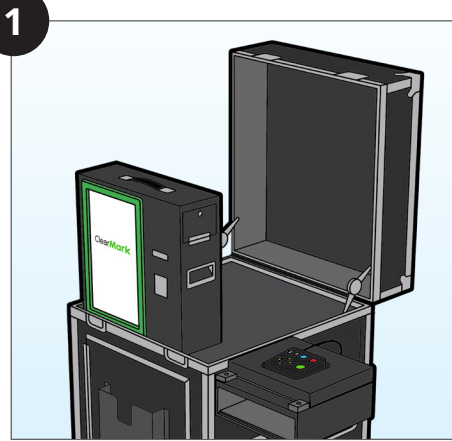


ClearMark™ Training

Instructions for Voters

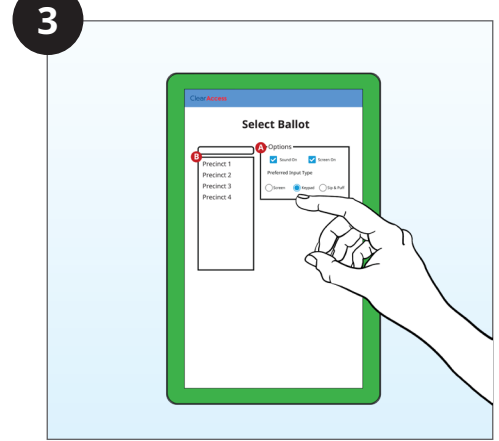
Voting and casting a ballot with ClearMark™



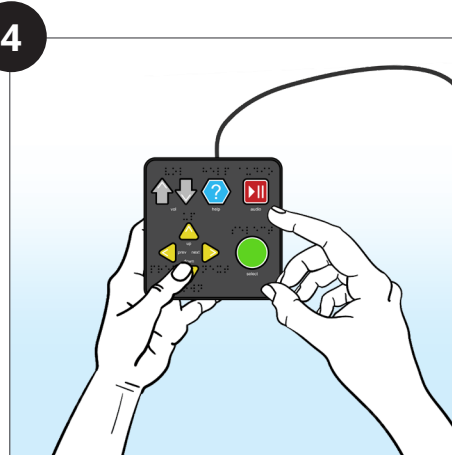
The voter is accompanied to the ClearMark™ Ballot Marking Device by a poll worker.



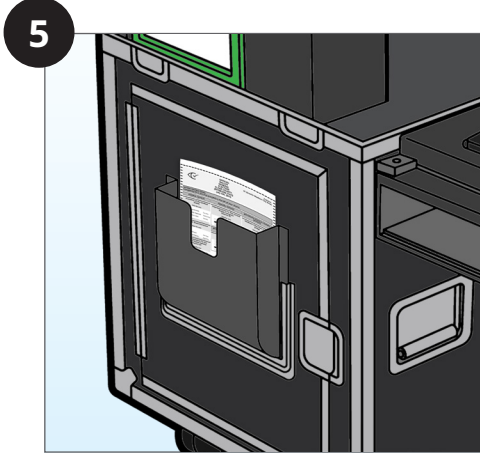
The voter chooses which input device to use: touchscreen, keypad, or sip and puff.



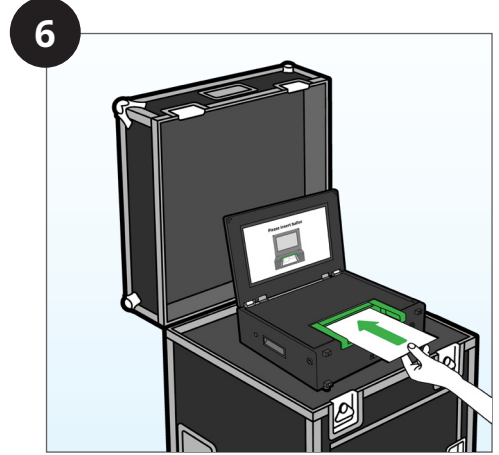
The poll worker logs in and chooses the precinct, ballot style, and input type for the voter. This can also be done using a QR code or smart card.



The voter uses their chosen input device to mark their ballot. (See instructions for input devices on pages 2-4.)



The voter reviews their ballot on the ClearMark device and then prints their ballot when they are satisfied with their selections.

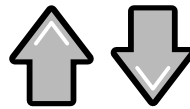
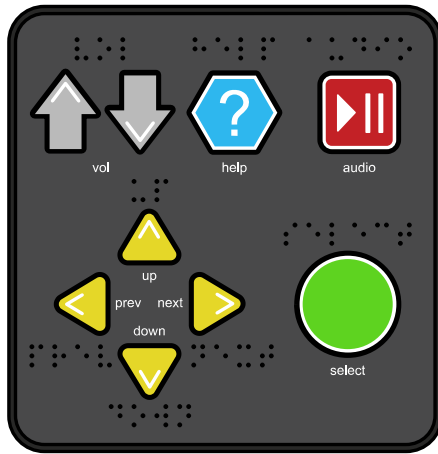


The voter casts their ballot through the ClearCast Go™ tabulator.

Marking a Ballot with the Keypad



Keypad Overview



Volume

- Control text-to-speech volume from any screen



Play/Pause

- Start or stop text-to-speech from any screen
- Press and hold to restart a paragraph



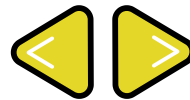
Up/Down

- Scroll up and down
- Navigate menus
- Choose a letter when typing



Help

- Access the help menu from any screen
- Press and hold to access the settings menu



Previous/Next

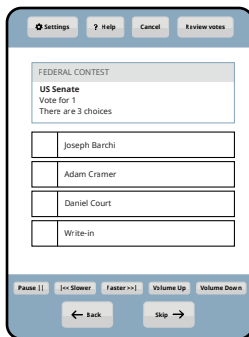
- Navigate between contests
- Press and hold to cancel voting session
- Press and hold to review votes from any screen



Select

- Select and deselect a contest choice or menu option

Contest Screen



Up/Down

- Scroll between candidates within the active contest



Next

- Skip to the next contest
- Press and hold to review votes for the session



Previous

- Return to the previous contest
- Press and hold to cancel the voting session



Select

- Select or deselect a highlighted choice

Write-in Screen



Up/Down

- Select a character by stepping through the alphabet forwards or backwards



Next

- Move to the next letter
- Press and hold to clear the write-in field and return to the contest



Previous

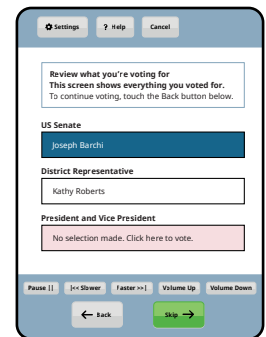
- Return to the previous letter



Select

- Confirm write-in choice

Review Screen



Up/Down

- Scroll up and down between contests



Next

- Press to print ballot



Previous

- Return to the previous contest screen
- Press and hold to cancel the voting session



Select

- Return to the selected contest



Contest Screen

Tap **Settings** for Magnification, Color and Contrast, Audio ballot playback, Visual ballot display.

Tap the box to the left of the candidate's name to make a selection, tap again to deselect your choice.

Tap the box to the left of the **Write-in** option to prompt the Write-in Screen (see below).

Tap **Review Votes** to view the Ballot Review Screen (see bottom of page).

Tap **Cancel** to Cancel the voting session.

Tap **Help** for Voting Instructions.

Write-in Screen

Tap the letters to enter the Write-in candidate's name.

Tap **Accept** to save the candidate's name

Review Screen

Tap a contest to return to that contest screen to vote or edit choice.

Tap to scroll down and see more contests.

Tap **Print** to print ballot.

Marking a Ballot with the Sip-and-Puff



Contest Screen

TRIPLE PUFF

Access **Settings**:
Magnification, Color, Contrast,
Audio ballot playback, and
Visual Ballot Display

SINGLE PUFF

Go to next choice

SINGLE SIP

Return to previous choice

LONG PUFF*

Select or deselect a choice, or
to access the **Write-in** Screen
(below)

LONG SIP*

Access the top menu

TRIPLE SIP

Cancel the voting session

DOUBLE SIP

Go to previous contest

DOUBLE PUFF

Go to the next contest

Write-in Screen

SINGLE PUFF

Scroll forward through
characters

SINGLE SIP

Scroll backward through
characters

DOUBLE PUFF

Accept letter and continue
to next character

LONG PUFF*

Accept the Write-In
candidate's name

Review Screen

SINGLE SIP

Advance through the contest
and candidate list

LONG PUFF*

Return to selected contest on
the ballot

DOUBLE PUFF

Print the ballot

*A long sip or puff is about a half-second long

